

## PMT SERVICE AND MAINTENANCE REPORT

### CLIENT DETAIL

Ericsson Resource & Competence Center sdn. Bhd  9, Jalan Tiang U8/92, SEKSYEN U8, BUKIT JELUTONG INDUSTRIAL PARK, 40150 Shah Alam, Selangor	Report Date	16/3/2026	Report Number	MIT-2025-62
	Service Date	14/3/2026	Service By	Team 1 (T.M)
	CF Expired Date	N/A	Client Incharge	JEFF

PMT No	<b>SL-PMT-32626</b>	Manufacturer	ASME BPVC SEC.VIII DIV		
Serial No	<b>YF/13/0357</b>	Year Built	2013	MAWP (Psi)	150
Vessel Type	VERTICAL	Safety Valve Size	N/A	Volume (Litre)	750

SCOPE OF MAINTENANCE		STATUS	REMARK
1	External Physical condition service: Cleaning all the visual dirt, grease, dust and etc to the satisfied end ( <i>as far as practicable</i> ).	√	
2	Internal Vessel Service: Cleans all the dirt, oil, water, impurities and etc ( <i>as far as practicable</i> ). Check for internal corrosion. Touch up with anti-corrosion paint if possible. If not, perform internal boroscope inspection for evaluation.	√	
3	Safety valve testing: Testing the safety valve functioning manually and in- operation testing at its setting value. Perform calibration check as per TMSB calibration procedure	√	SET AT 10 BAR
4	Draining Valve: Ensure valve is functioning and able to drains the vessel appropriately	√	
5	Pressure Gauge: ' Zero value ' at emptied vessel, marking at MAWP value as designed by manufacturer. Perform calibration check as per TMSB calibration procedure	√	TO MARK MAWP ON GAUGE
6	Testing & commissioning: Running the whole system to ensure all parts and system in good shape & works evidently	N/A	
7	Saddle, leg or foundation condition	√	
8	Nozzle/ flange connection and insulation condition	√	

### COMMENT & RECOMMENDATION

1	Pull the safety valve regularly to avoid malfunction. Contact us promptly in the event of failure. Required to calibrate safety valve and pressure gauge
2	

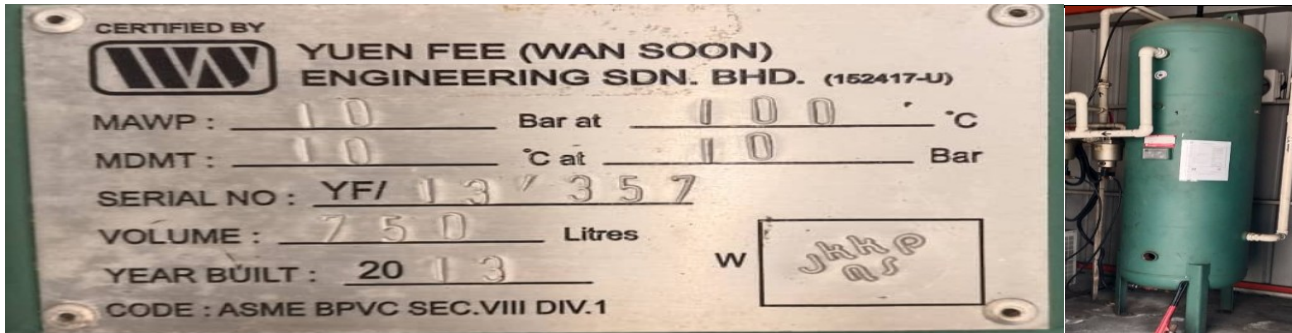
### SUMMARY

- Keep this report for record and references.

## SERVICES & MAINTENANCE PROCESS

### APPENDIX PICTURE

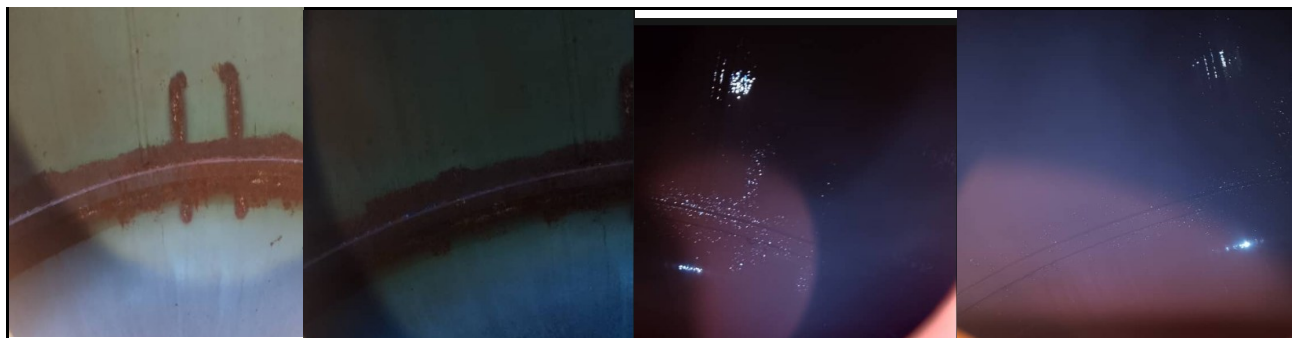
#### COMPRESSOR NAME PLATE AND OVERALL VISUAL



#### SFETY VALVE CALIBRATION AND TESTING



#### INTERNAL PHOTO BEFORE AND AFTER PAINTING



 <p><b>TIJARAH MABRUR (M) SDN BHD</b> Registered: 202201023780 (1469477-U) 6-8, Setapak Commercial Centre (Starparc Point) Jalan Taman Ibu Kota, Taman Danau Kota, 53100, Setapak Kuala Lumpur, Malaysia. Office: +60341444035 Whatsapp: +60123983404 Email: admin@tjaramabrur.my Website: www.tjaramabrur.my</p> <p><b>Syukri Yusof</b> Crane &amp; Machinery inspector - NIOSH</p> <p>Tijarah Mabrur (M) Sdn Bhd Mobile : 017-5998433 Email: syukri@tjaramabrur.my</p>	<p>Review and approved by</p>  <p><b>TIJARAH MABRUR (M) SDN BHD</b> Registered: 202201023780 (1469477-U) 6-8, Setapak Commercial Centre (Starparc Point) Jalan Taman Ibu Kota, Taman Danau Kota, 53100, Setapak Kuala Lumpur, Malaysia. Office: +60341444035 Whatsapp: +60123983404 Email: admin@tjaramabrur.my Website: www.tjaramabrur.my</p> <p><b>Shalihin Idris</b> Consultant, Safety &amp; Health Advisor-NIOSH Cert NDT Inspector, Ultrasonic Thickness Gauging (UTG) Level II-SIRIM/JPK Mobile : 012-3983404 Email: shalihin@tjaramabrur.my</p>
---	--

END OF REPORT